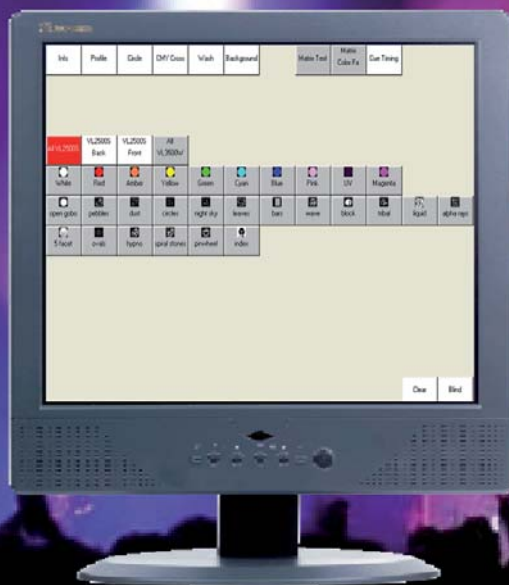




ChamSys

bringing innovation and technology to lighting design



MagicQ Architectural Controller

Working on Linux

2 Direct DMX Outputs for

DMX version

18 Universes

In-built Touch Screen

Compatible with all other MagicQ

Products

202 Playbacks

Quick and Easy to Programm

Fully Featured Theatre Stacks

Advanced Media Server Support

In-built Media Engine

Fixture Morphing & Cloning

LED Pixel Mapping

www.chamsys.be

Tel: +32 (0)52 412924 Fax: +32 (0)52 412530 E-mail: info@avl.be
Audio Visual Lighting bvba, Heidekant 16, 9280 Lebbeke - Belgium

MagicQ Architectural Controller

The MagicQ Architectural Controller is a stand alone controller for installations. The MagicQ Architectural Controller consists of a 15inch touch screen connected to a compact base system. The Architectural Controller outputs Ethernet and twin direct DMX512 outputs.

The MagicQ Architectural Controller runs Linux operating system and runs standard MagicQ software. Shows are interchangeable between the MagicQ Architectural Controller, standard MagicQ consoles and MagicQ PC. It boots directly into MagicQ, providing an easy to use touch screen interface.

The MagicQ Architectural Controller is also available as a network only version without DMX512 outputs. MagicQ wings can be connected to the MagicQ Architectural Controller to aide with programming of shows.

Specification

Universes	18
Channels	9216
Number of fixtures	Up to 9216
Cues	5000
Cue Stacks	2000
Palettes	3096
Groups	1000
Numbers of shows	Virtually unlimited
Media Server support	50 (each different content)
Encoders	0
Faders	0
Buttons	0
Direct DMX512 ports	2 (DMX version)
Dimmable LED console lamps	0
Remote trigger input	0
Security lock fixing	1
Choice of colours	Black
Power input	110 to 240V AC
Width	325mm
Depth	225mm
Height	315mm
Weight	3,9kg

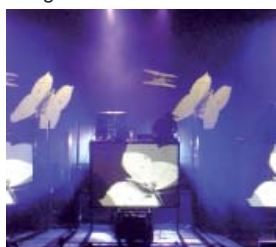
Features

Tracking / non-tracking option
Fixture, FX and Gel Library
In-built Fixture Editor
In-built Media Engine
LED pixel mapping
Fixture morphing and cloning

Rainbow colour picker (RGB, HSI)
Individual fade times on any channel
Easy fanning of parameters and times
Configurable faders - HTP, LTP, speed, size, masters
Theatre mark cues, split fades and inhibit masters

Client/Server network architecture
Multiple console Playback Tracking
In-built Web Server
Remote console control
Visualiser support (including patch transfer)
Architectural Zoning and Day/Date support

MIDI & SMPTE option



www.chamsys.be

Tel: +32 (0)52 412924 Fax: +32 (0)52 412530 E-mail: info@avl.be
Audio Visual Lighting bvba, Heidekant 16, 9280 Lebbeke - Belgium